

# Resilient Borders - Crisis Management - Pilot actions

## Recipient organisations

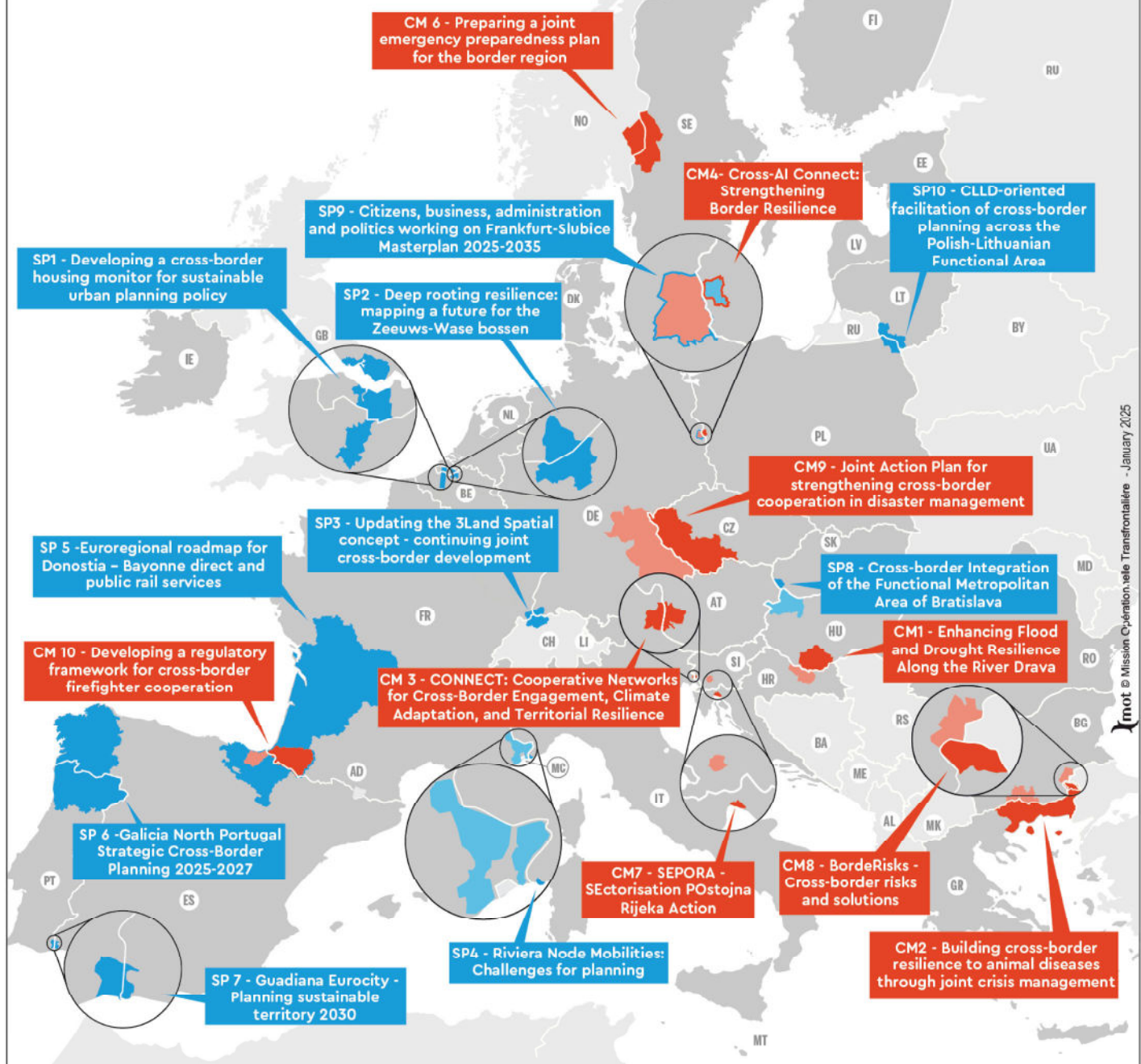
- CM1** - HU/HR - Local government of Baranya county in partnership with Virovitica-Podravina county
- CM2** - EL/BG - Region of Eastern Macedonia & Thrace in partnership with Regional administration of Smolyan
- CM3** - IT/SI - EGTC GO
- CM4** - PL/DE - City of Slubice in partnership with City of Frankfurt (Oder)
- CM6** - NO/SE - Border region ARKO
- CM7** - HR/SI - City of Rijeka in partnership with Municipality of Postojna
- CM8** - EL/BG - Municipality of Orestiada in partnership with Svilengrad Municipality
- CM9** - CZ/DE - Ministry of the Interior - Directorate General of the Fire Rescue Service of the Czech Republic in partnership with Bavarian State Ministry of the Interior, for Sport and Integration
- CM10** - FR/ES - Pyrénées-Atlantiques Departmental Fire and Rescue Service (SDIS64) in partnership with Provincial Council of Gipuzkoa



# Selected pilot actions

## CRISIS MANAGEMENT

## SPATIAL PLANNING



Main recipient organisation

Partner organisation

# Resilient Borders - Spatial Planning - Pilot actions

## Recipient organisations

- SP1** - BE/NL - North Sea Port District BGTC
- SP2** - BE/NL - EGTC Linieland van Waas en Hulst
- SP3** - FR/DE/CH - Trinational Eurodistrict Basel
- SP4** - FR/IT - Ventimiglia Municipality in partnership with Nice Côte d'Azur Metropolis and Community of Agglomeration of the French Riviera (CARF)
- SP5** - FR/ES - EGTC Euroregion Nouvelle-Aquitaine Euskadi Navarre
- SP6** - PT/ES - Galicia Norte Portugal EGTC
- SP7** - PT/ES - EGTC Eurociudad Del Guadiana
- SP8** - HU/SK - Bratislava Municipality in partnership with General Assembly of the Local Government of Győr-Ménfőcsanak-Sopron County
- SP9** - DE/PL - City of Frankfurt (Oder) in partnership with Municipality of Slubice
- SP10** - LT/PL - Polish-Lithuanian Cross-Border Functional Area EGTC

Main recipient organisation

Partner organisation

Imot © Mission Opérationnelle Transfrontalière - January 2025