

# WORKING GROUP ON INNOVATIVE SOLUTIONS TO CROSS BORDER OBSTACLES

## LUXEMBOURG PRESIDENCY OF THE EU FOLLOW-UP 3 MAY 2018







# GREATER COPENHAGEN

Senior Advisor Matilda Sommeliuss

A light gray silhouette map of Europe serves as the background. The British Isles, including Great Britain and Ireland, are highlighted in a solid orange color. Overlaid on the map are five orange numerical figures, each paired with a label in a bold, black, sans-serif font. The numbers are: 1 (near Ireland), 2 (over Scandinavia), 3 (over Central Europe), 4 (over Eastern Europe), and 79 (over the highlighted British Isles).

**1**

**vision**

**2**

**countries**

**3**

**regions**

**4**

**million inhabitants**

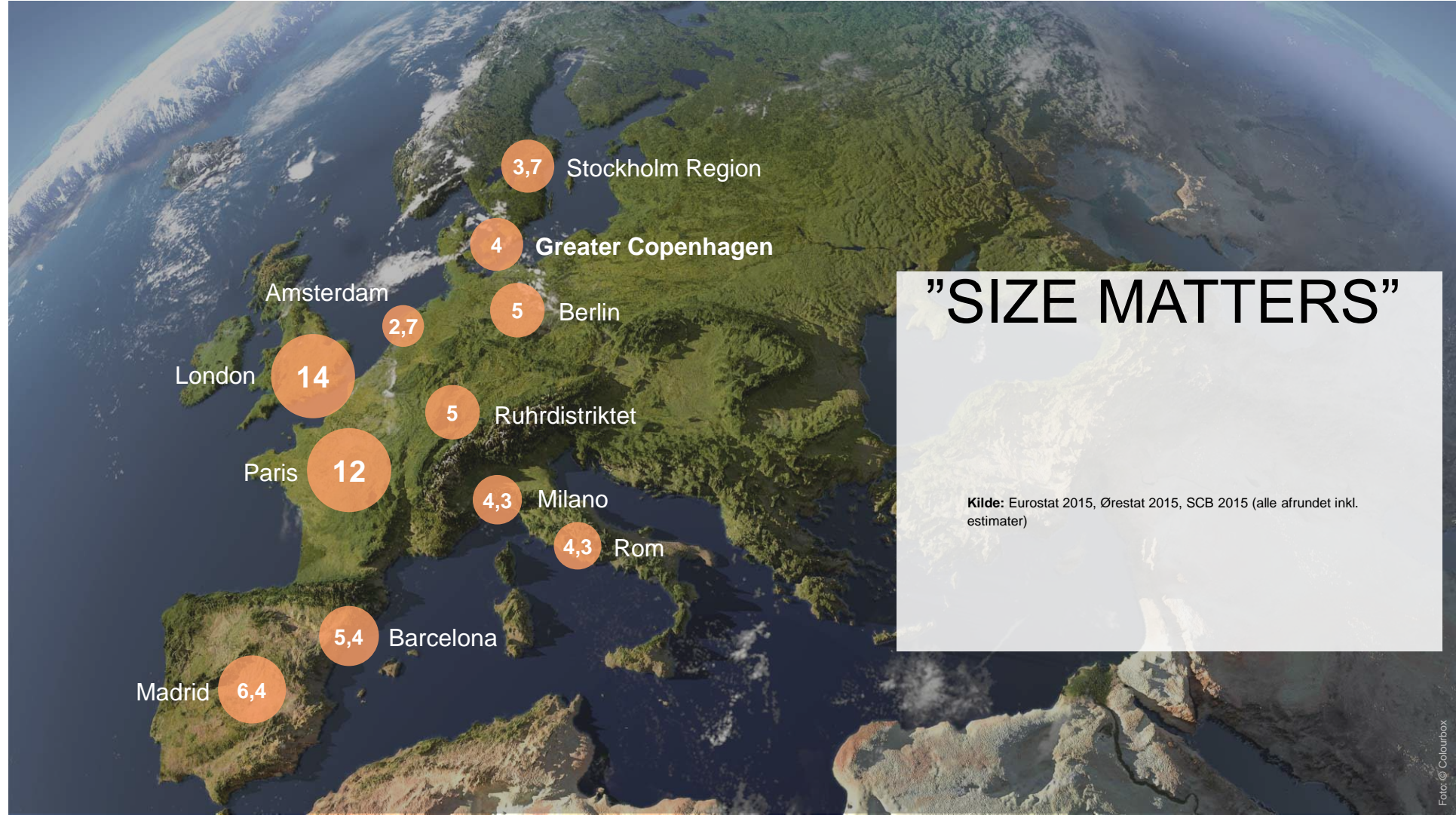
**79**

**municipalities**



## OECD report from 2009, catalyst for Greater Copenhagen

- Reduced economic growth in the capital area compared with other North European metropolitan areas
- A strategic investment was recommended to:
  - Increase the supply of competencies
  - Promote innovation and research
  - Upgrade the infrastructure
  - Strengthen the governance structure
- 2013 – Danish "*Focused growth agenda*"
- Common vision together with Scania, Skåne
- 2015: Negotiations on the formation of "Greater Copenhagen & Skåne Committee"
- 2016: New organisation, The Greater Copenhagen & Skåne Committee







VISION

”

***VISION FOR GREATER COPENHAGEN***

***GREATER COPENHAGEN IS THE CENTRE OF  
SUSTAINABLE GROWTH AND QUALITY OF LIFE***

***BECAUSE WE OFFER AGILE, COLLABORATIVE AND  
ACCESSIBLE CONDITIONS***

***WHERE PEOPLE AND BUSINESSES CAN UNLEASH  
THEIR POTENTIAL***

GREATER  
**CoPENHAGEN**



# ORGANIZATION

Capital Region + Zealand

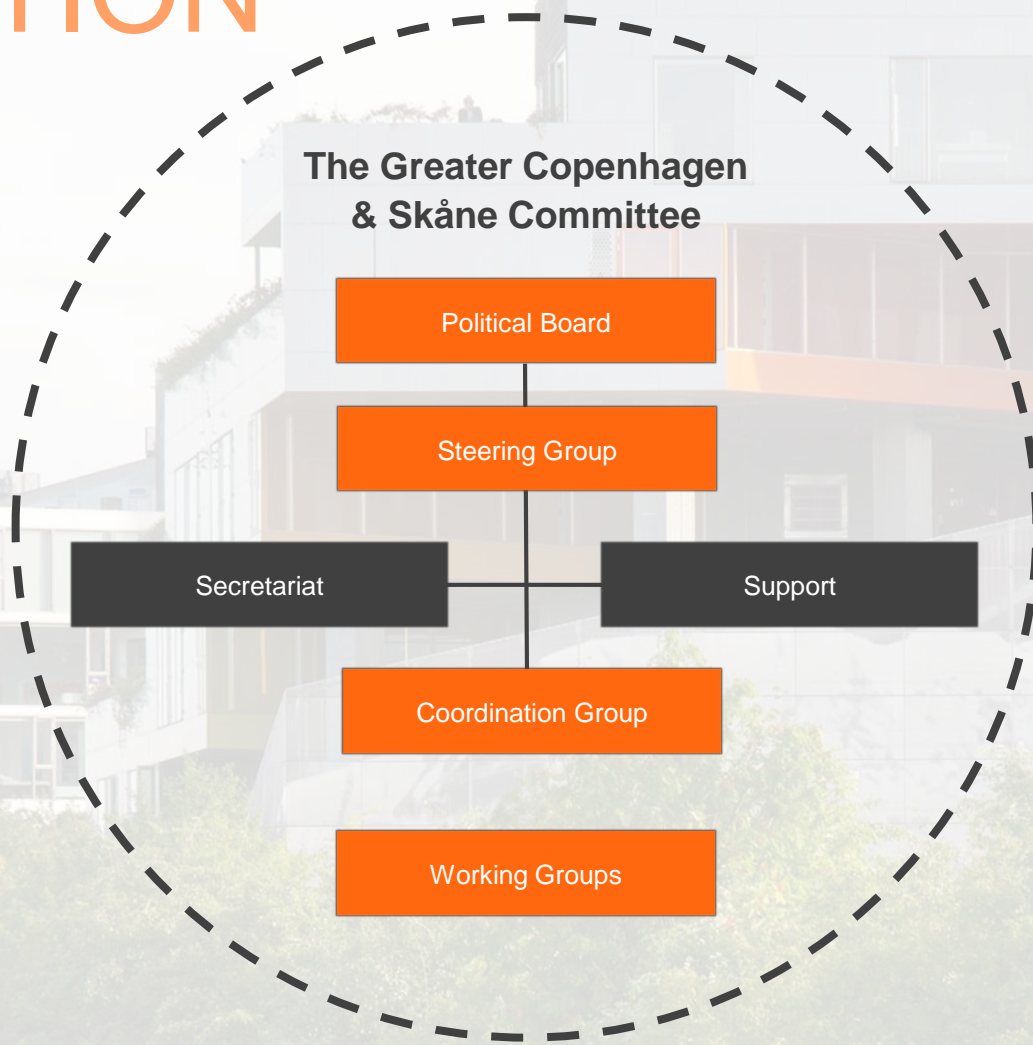
Capital Region (2)

KKR Capital (2)

Copenhagen municipality (1)

Zealand (2)

KKR Zealand (2)



SKÅNE

Region Skåne (3)

Kommunförbundet Skåne (1)

Malmö (1)

Lund (1)

Helsingborg (1)

Kristianstad (1)

Hässleholm/Landskrona/Trelleborg (1)



# TRAFFIC CHARTER

12 October 2016

This charter represents a shared vision of how a well-functioning, robust and sustainable infrastructure will help to strengthen mobility and boost economic growth and welfare. The charter is a proposal for a dialogue with the state authorities on both sides of the Øresund.

# GREATER CoPENGHAGEN



# FOCUS AREAS IN 2018-2019

## 1 Infrastructure

## 2 Attract talents and investments

## 3 International marketing

### FYRA FOKUSOMRÅDEN – TRE SIGNATURPROJEKT

Greater Copenhagen & Skåne Committee har fyra politiska fokusområden som utgör grunden för samarbetet:

Bättre infra-  
struktur och  
mobilitet



Att locka talan-  
ger, turister och  
investeringar



Internationell  
marknadsföring

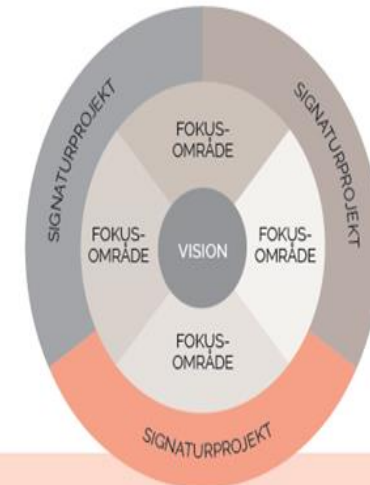


Skapa en  
alltmer integrerad  
tillväxtregion



Fokusområdena är lika högt prioriterade. I handlingsplanen knyts de fyra fokusområdena till de tre signaturprojekten som ska stärka Greater Copenhagen's tillväxt och internationella konkurrenskraft.

## 4 To create an integrated growth region



Greater Copenhagen  
som life science-  
centrum

Greater Copenhagen  
Gigabit

Gränslös kollektiv-  
trafik i en integrerad  
arbetsmarknad i  
Greater Copenhagen

# A SUCESSFULL BORDER REGION

- Oresund Bridge opened in 2000
- 14-18 000 cross border commuters
- "Oresund's strategy" Two countries one labour market
  - Provide information service for commuters
  - Identify obstacles and discuss potential solutions in working groups
  - Focus is on barriers that inhibit economic growth
  - Cooperation with regional authorities and organizations
  - Cooperation with other border regions
  - Nordic Council of Ministers, Freedom of Movement (database)
  - Lobbying
  - Highlight obstacles in projects

GREATER  
**CoPENHAGEN**

**øresunddirekt**  
oresunddirekt.com

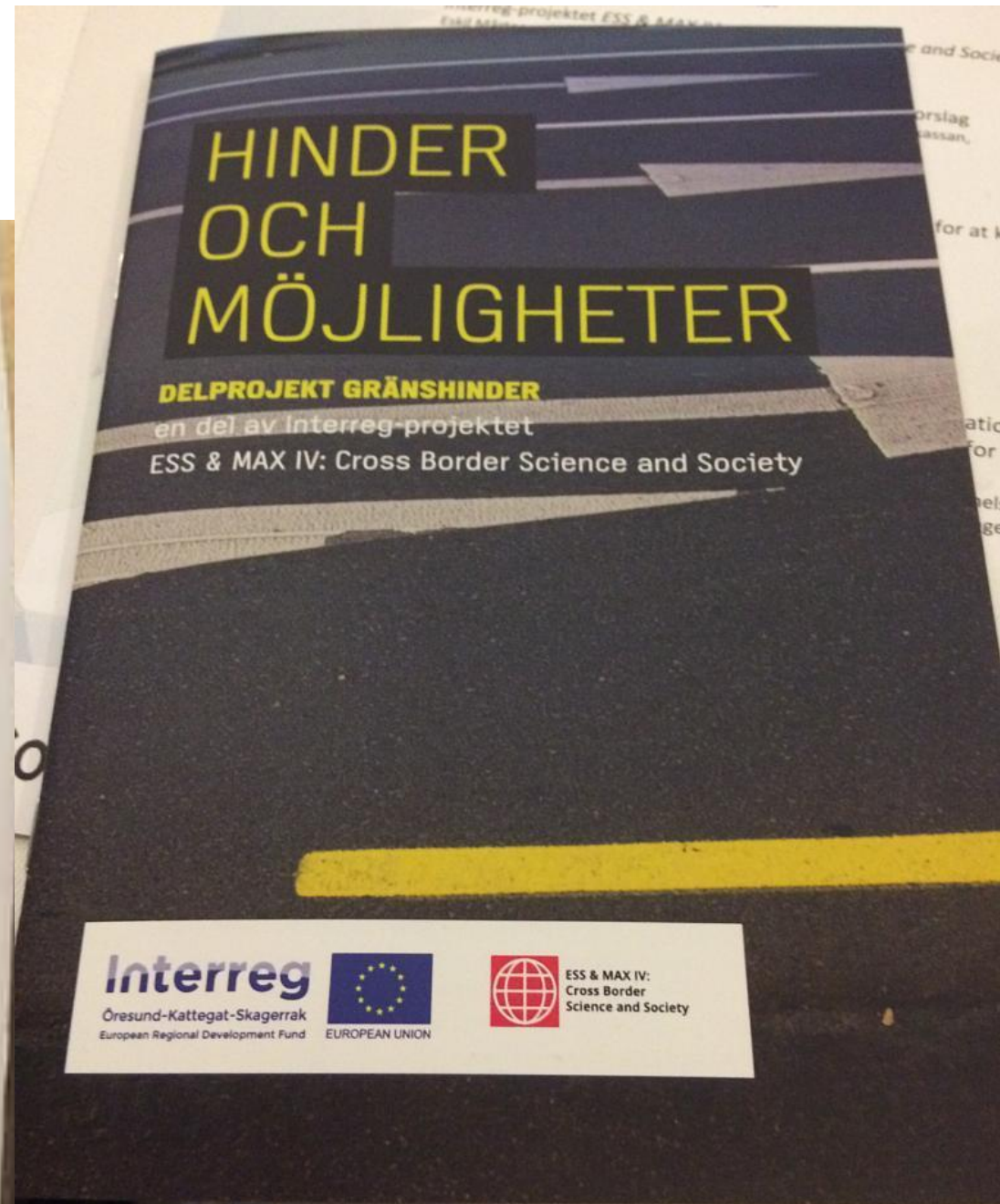


**Nordisk Ministerråd**  
Nordic Council of Ministers



# PROJECT BASED

Program	
9.30	Kaffe
10.00	Velkomst! Johan Wessman, moderator Interreg-projektet ESS & MAX IV - Cross Border Science and Society Erik Mårtensson, projektleder, Region Skåne, Jakob Øster, co-projektleder, Region Hovedstaden
10.15	Delpjektet Grænsehindringer: resultater og løsningsforslag Malinda Sommerlund, delpjektleder, Ilina Fredriksson, Forsikringskassen, Malin Dahl, Arbejdsformidlingen, Ole Bundgaard Jensen, Skat DK, Tommy Persson, Skatteverket
11.00	Hvad er ESS? Hvilke behov har forskningsanlæggene ESS? Hvad kræves for at kunne tiltrække høj kvalificeret arbejdskraft? Pia Kihult, Strategic Advisor, ESS
11.15	Pause
11.30	Grænsehindringer i hverdagen - grænsependlere fortæller
11.50	Diskussion: Hvad skal der til for at løse problemstillingerne på regionalt, nationalt og EU- niveau? Hvordan skaber vi en attraktiv og "grænseløs" region for internationale talenter? Pia Kihult, Strategic Advisor, ESS, Fredrik Melander, chefkonsulent, uddannelses- og Erasmus Christensen, formand for The Greater Copenhagen & Skåne



# A NEW BORDER BARRIERS STRATEGY

- **Prioritize**
- **Influence**
- **Politicize**

## **New initiatives:**

- **Appoint Ambassadors**
  - **Annual meeting to highlight border barriers**
- 
- 1. Difficulties for third-country citizens to commute in Greater Copenhagen**
  - 2. Difficulties to validate education and different professional qualifications**
  - 3. Difficulties to enroll in workplace training**





[greatercph.com](http://greatercph.com)



[greater-copenhagen](https://www.linkedin.com/company/greater-copenhagen)



[@GreaterCph](https://twitter.com/GreaterCph)

