

Venue (hybrid)

Sciences Po Strasbourg (06/10)

7 Rue de l'Ecarlate, 67082 Strasbourg (France)

Tram line A or D, or Bus line 10, 14 or 24. Stop at *Porte de l'Hôpital*
Auditorium F, access 2nd and 3rd floors

Hochschule Kehl (07/10)

Kinzigallee 1, 77694 Kehl (Germany)

From Strasbourg: Tram line D. Stop at *Hochschule/Läger*

Online access:

Online registration required at:

Contact:

Strasbourg : Marc-Antoine Maes : m.maes@unistra.fr

- The physical organization depends on the evolution of the pandemic and may be shifted entirely online if the sanitary situation requires it.



Jean Monnet Network – Borders in Motion
Réseau Jean Monnet – Frontières en Mouvement



Research Seminar

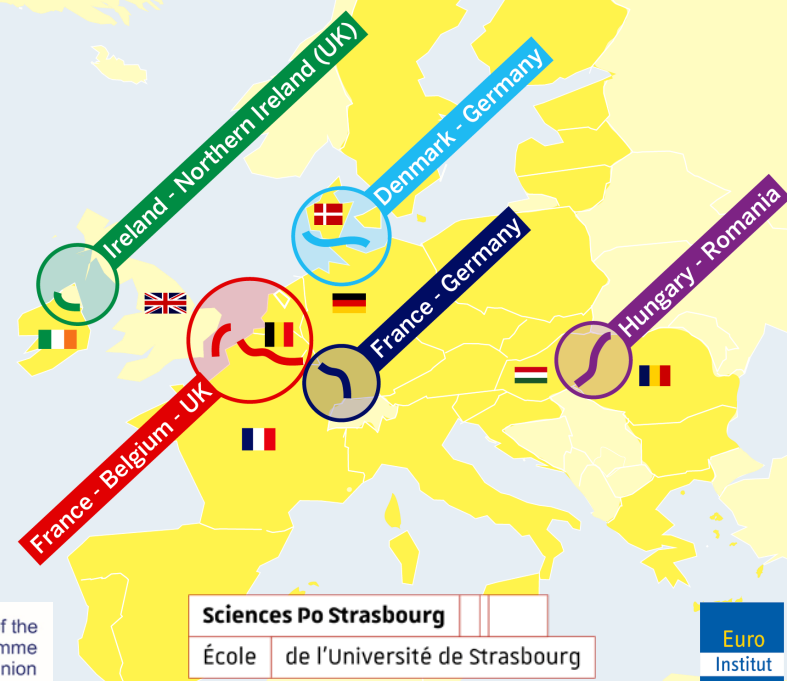
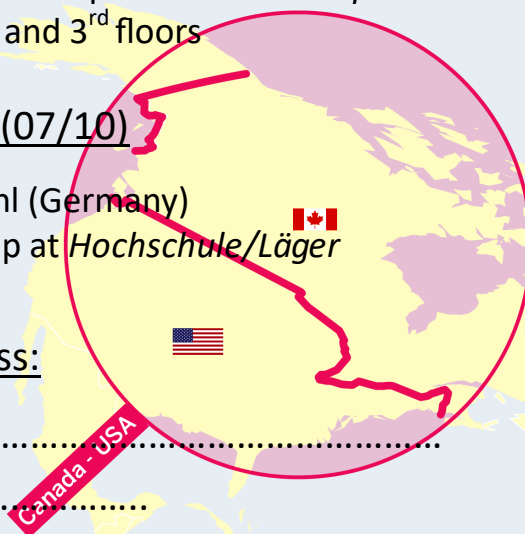
The model of the Franco-German border

Reconciliation, cooperation, integration

Jean Monnet Network FRONTM

In collaboration with the University of Applied Sciences Kehl

6-7 October 2021



Sciences Po Strasbourg
École de l'Université de Strasbourg



Seminar on the model of the Franco-German border

Organized in the framework of the French presidency of the EU

FRONTEM is the first Jean Monnet network which has been obtained by France within the framework of the EU's Erasmus+ activity program. It brings together 3 Centres of excellence and 7 Jean Monnet Chairs both from Europe and Canada and its aim is to develop international and multidisciplinary research linking European Studies and Border Studies, i.e. two so far not much interconnected fields of study. Our network seeks to facilitate a new reading of the role of the borders in European integration by considering that there is not only one model of perception and management of borders in and around the European Union, but that these also depend on the specificity of each border region concerned.

During 4 years, our network carries out exchanges of knowledge and practice on five different models of management of EU borders by gathering young researchers, PhD students and citizen associations. A comparative analysis will also be conducted between the EU and Canada in order to evaluate if European border models could be transposed in other regions throughout the world. The network plans to organize a doctoral seminar, several research seminars and a number of focus-groups which will allow to give an overview also of the perception of borders by representatives of the civil society situated in cross-border territories. The objective is to develop a typology of models on perception and management of borders in the EU corresponding to political needs and to the expectations of European people.

The purpose of this seminar is to study the Franco-German border as a place of reconciliation and a model of European Integration. It will particularly concern the way the 2 cross border spaces, i.e. the Upper Rhine Region (France, Germany and Switzerland) and the Greater Region (Germany, Luxembourg, France, Belgium) manage the border and cross-border cooperation and how the people in the border region perceive the border. It will also analyze recent developments of local transborder cooperation during and after the COVID19 crisis and assess possibilities of smart border management for the future.

Program

Wednesday 6th October - 18.30 - 20.00 Sciences Po Strasbourg

18.30-20.00: Roundtable: Border regions in times of COVID-19

Maureen O'Reilly (Cross-border Center Armagh)

Fabienne LELOUP (Catholic University Louvain)

Gyula OCSKAY (CESCI)

Martin KLATT (University of Southern Denmark)

Birte WASSENBERG (University of Strasbourg)

Moderation: Oliver Schmidtke (University of Victoria)

Thursday 7th October - 8.30 - 19.30 Hochschule Kehl

8.30 Introduction

8.30 Welcome

Joachim BECK (Rector of the Hochschule Kehl)

Frontem in the framework of the EU French presidency

Frédérique BERROD (Sciences Po Strasbourg)

8.45 Key notes:

Joachim BECK (Hochschule Kehl)

Birte WASSENBERG (Sciences Po Strasbourg)

9.15 - 10.45 First part: The Franco-German Model

Jean PEYRONY (MOT)

Fabrice LARAT (Institut du service public)

Jacob ROSS (Deutsche Gesellschaft für Auswärtige Politik)

11.00 Second Part: The model of the Greater Region

Pauline PUIPIER (University of Artois)

Nora CROSSEY (University Saarland)

Reine WAKOTE-FALCO (University of Metz)

Florian WEBER (University of Saarbrücken)

President of session: Birte Wassenberg (Sciences Po Strasbourg)

12.30 Lunch

14.00 - 16.00 Third Part: The model of the Upper Rhine Region

Bernard REITEL (Université d'Artois)

Michael FREY (Hochschule Kehl)

Philippe HAMMAN (University of Strasbourg)

Catherine LEDIG (University of Strasbourg)

Hans-Jörg DREWELLO (Hochschule Kehl)

President of session: Anne HOFMANN (Euro-Institut)

16.30-17.30 Fourth Part: Crossed Analysis with network members

Analysis with research discussants of the 4 other border regions

18.00 - 19.30 Round-table: (in German translation English)

A manifest for the Franco-German Border after COVID19

Joachim BECK (Hochschule Kehl)

Andreas JUNG (Co-president Franco-German Parliament, angefragt)

Karl-Heinz LAMBERTZ (President AEBR)

Bärbel SCHÄFER (President Regierungspräsidium Freiburg, angefragt)

Nathalie VERSCHELDE (DG Regio, angefragt)

Philippe VOIRY (Ministry of Foreign Affairs, Paris, angefragt)

Birte WASSENBERG (Sciences Po Strasbourg)

Moderation: Anne THEVENET (Euroinstitut Kehl)